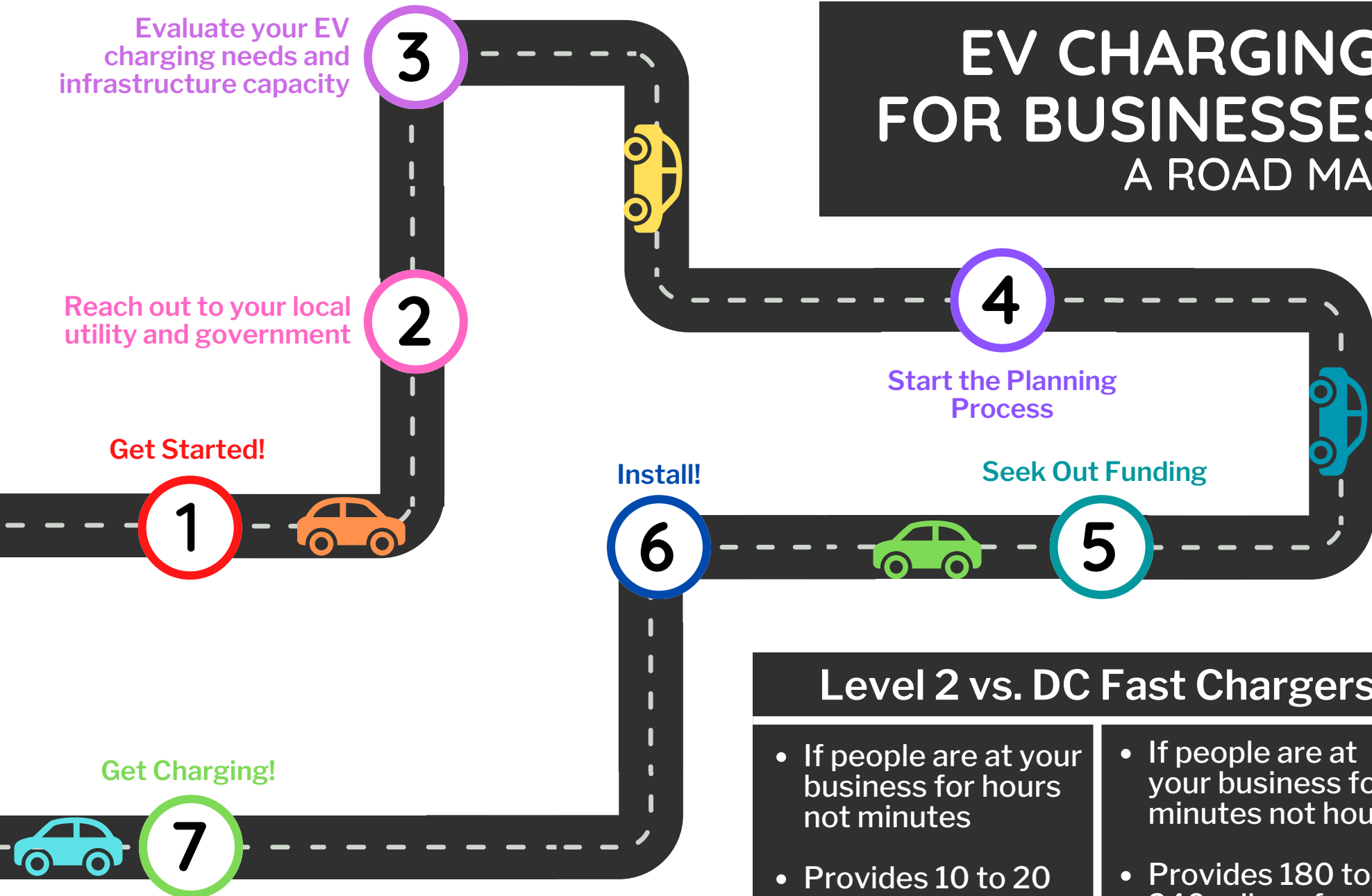


EV CHARGING FOR BUSINESSES

A ROAD MAP



Level 2 vs. DC Fast Chargers

- If people are at your business for hours not minutes
- Provides 10 to 20 miles of range per hour of charging
- If people are at your business for minutes not hours
- Provides 180 to 240 miles of range per hour of charging



1

Get Started! Think about these questions:

- Will the building owner let EV chargers be installed?
- Are customers or employees asking for EV charging?



2

Reach out to your local utility and government to understand rate structure, power availability, metering, load management, and code requirements

- Holy Cross Energy - EV@HolyCross.com
- [Xcel Energy](#)

3

Evaluate your EV charging needs and infrastructure capacity

- Survey employees and customers to understand how many chargers you need
- Determine the type of EV chargers your business should have. Level 2 vs. DC Fast Charger
- Can your electric panel handle increased load from EV chargers? Rebates may be available!

4

Start the Planning Process

- Determine ownership and maintenance responsibilities with building owner
- Consider pre-wiring for future EV chargers
- Consult your local utility
- Consult with several EV charger companies and choose a provider
- Consult with and choose a contractor
- Apply for building permits
- Work with local government to ensure EV chargers are installed to code

5

Seek Out Funding

- [Charge Ahead Colorado](#) - Grant funding for community-based EV charging stations
- [DC Fast Charger Plaza Funding](#) - Program funds high-speed charging along highways
- [EV Funding Finder](#) - Easy to use tool to identify federal EV funding opportunities
- [ReCharge Colorado Coach](#) - Contact your regional coach for assistance getting EV chargers
- [Holy Cross Energy](#) - Explore EV charging offerings for your business
- [Xcel Energy](#) - Explore EV charging offerings for your business

6

Install!

7

Get Charging!

- Determining charging costs for employees and customers
- Consider creating rules about how long you can charge for, moving vehicles, etc
- Schedule regular maintenance to ensure warranty remains valid