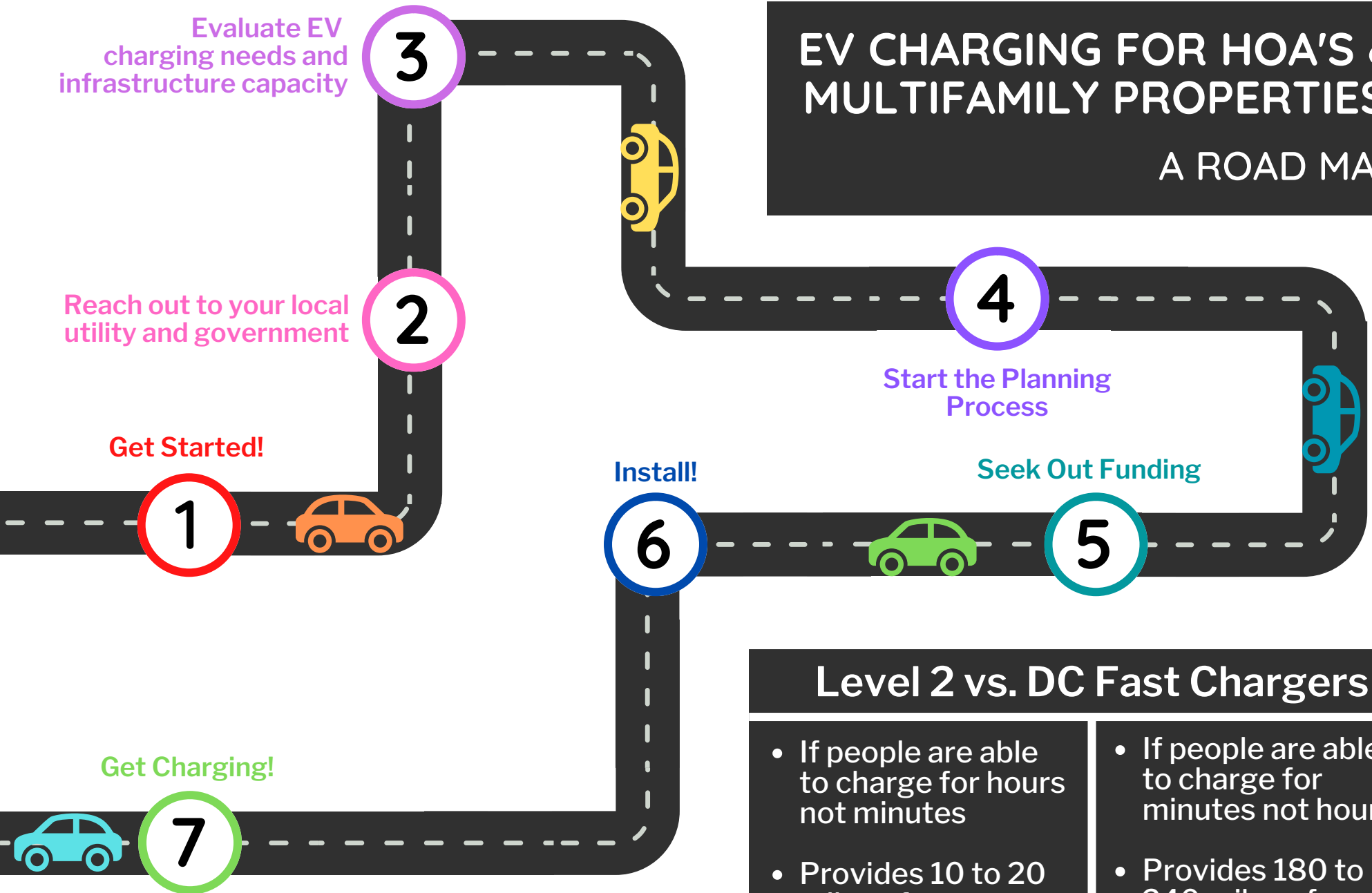


EV CHARGING FOR HOA'S & MULTIFAMILY PROPERTIES

A ROAD MAP



Level 2 vs. DC Fast Chargers

- If people are able to charge for hours not minutes
- Provides 10 to 20 miles of range per hour of charging
- If people are able to charge for minutes not hours
- Provides 180 to 240 miles of range per hour of charging

1

Get Started! Think about these questions:

- Will the property manager or HOA allow chargers to be installed?
- Are residents asking for EV charging?

2

Reach out to your local utility and government to understand rate structure, power availability, metering, load management, and code requirements

- Holy Cross Energy - EV@HolyCross.com
- [Xcel Energy](#)
- Contact your community's permit technician for details on code requirements

3

Evaluate EV charging needs and infrastructure capacity

- Survey residents to understand how many chargers you need
- Consider the type of EV chargers that should be installed. Level 2 vs. DC Fast Charger
- Can the electric panel(s) handle increased load from EV chargers? Rebates may be available!

4

Start the Planning Process

- Determine ownership and maintenance responsibilities with building owner or HOA
- Consider pre-wiring to future proof for additional EV chargers
- Consult your local utility
- Consult with several EV charger companies and choose a provider
- Consult with and choose a contractor
- Apply for building permits
- Work with local government to ensure EV chargers are installed to code

5

Seek Out Funding

- [ReCharge Colorado Coach](#) - Contact your regional coach for assistance acquiring EV chargers
- [Charge Ahead Colorado](#) - Grant funding for community-based EV charging stations
- [Eagle County EV Accelerator](#) - Supplemental funding for neighborhood EV chargers
- [EV Funding Finder](#) - Easy-to-use tool to identify federal EV funding opportunities
- [Holy Cross Energy](#) - Explore EV charging programs for your building or HOA
- [Xcel Energy](#) - Explore EV charging programs for your building or HOA

6

Install!

7

Get Charging!

- Determining charging costs for residents and guests
- Consider creating rules about how long vehicles can charge for, moving vehicles, etc.
- Schedule regular maintenance to ensure warranty remains valid